



Outdoor Smart Plug Installation Guide

Like your new CYNC Outdoor Plug?
Share your experience!

Leave a review where you purchased the product.



GE is a trademark of General Electric Company. Used under trademark license.
Amazon, Alexa and all related logos are trademarks of Amazon.com, Inc. or its affiliates.
Google and Android are trademarks of Google LLC.

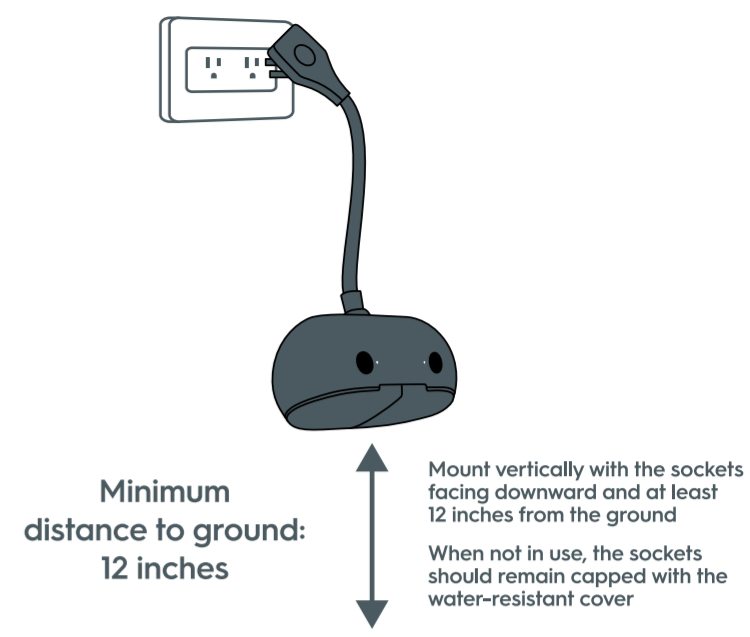
PK-00105714-3

Install Your Outdoor Smart Plug

Mount Plug Vertically with Sockets Facing Downwards

Simple Setup

- Identify where you want to mount your plug.
 - Mark the location for hole to be drilled.
 - Using 15/64" bit, drill hole in wall for mounting screw.
 - Insert anchor and install screw in desired location leaving 3/16" of the screw exposed.
 - Align mounting hole with screwhead, slide the bracket over the screw head and let the plug drop down to lock into place.
- When not in use, the sockets should remain capped with the weather-resistant cover.



Set Up and Enable Voice and Out of Home Control

Control Your Smart Plug Using Your Voice

- Plug your Outdoor Smart Plug into the outlet.
- Download the CYNC app. Minimum operating system requirements: Android™ 8 or higher or iOS 14 or higher.
- Add the Outdoor Smart Plug to the CYNC app. Tip: If your Outdoor Smart Plug has trouble connecting to Wi-Fi, make sure you are using your router's 2.4GHz band.
- Control with your voice using Amazon Alexa or Google Assistant-enabled devices by linking CYNC within the Google Home app or Alexa app and finding your device. Voila! Now you can control your outdoor lights and devices with your voice and away from home.

Connect with your Amazon Alexa or Google Assistant-enabled devices to control your outdoor lights and devices with your voice.

Try these voice commands:

Amazon Alexa

- Alexa, turn off front yard.
- Alexa, good morning.
- Alexa, turn on patio lights.

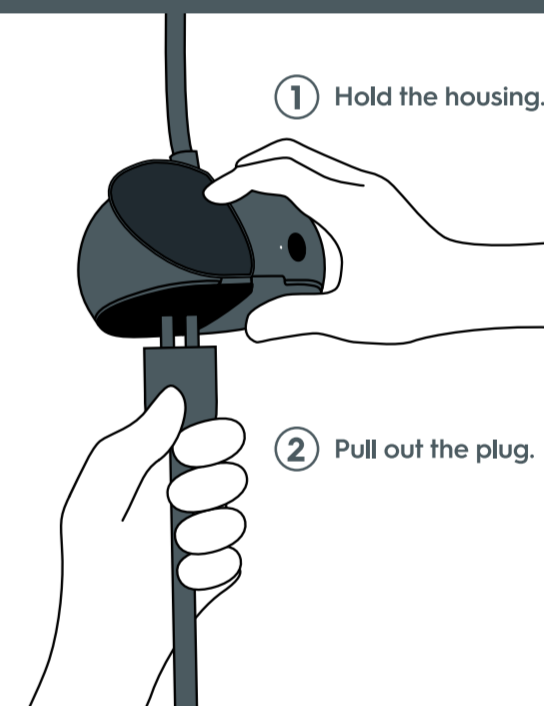
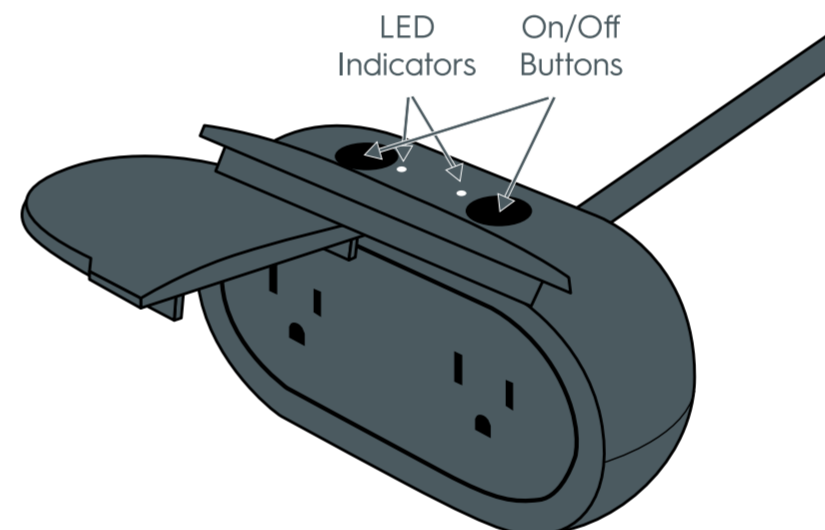
Google Home

- Hey Google, turn on the fountain.
- Hey Google, turn off the Christmas Lights.
- Hey Google, activate party scene.

Pre-setup is required in order for these queries to work as shown, including naming your device "fountain" or "Christmas light."

Smart Plug Controls & Indicators

Unplugging Devices



Additional Information and Warnings

FCC Compliance Statement Compliance Notice:

This equipment has been tested and found to comply with the limits for a Class B digital device, pursuant to part 15 of the FCC Rules. These limits are designed to provide reasonable protection against harmful interference in a residential installation. This equipment generates, uses and can radiate radio frequency energy and, if not installed and used in accordance with the instructions, may cause harmful interference to radio communications. However, there is no guarantee that interference will not occur in a particular installation. If this equipment does cause harmful interference to radio or television reception, which can be determined by turning the equipment off and on, the user is encouraged to try to correct the interference by one or more of the following measures:

- Reorient or relocate the receiving antenna.
- Increase the separation between the equipment and receiver.
- Connect the equipment into an outlet on a circuit different from that to which the receiver is connected.
- Consult the dealer or an experienced radio/TV technician for help.

This device complies with part 15 of FCC rules. Operation is subject to the following two conditions:

- This device may not cause harmful interference.
- This device must accept any interference received, including interference that may cause undesired operation.

Any changes or modifications not expressly approved by the party responsible for compliance could void the user's authority to operate the equipment.

This device complies with Industry Canada's license-exempt RSSs. Operation is subject to the following two conditions:

- This device may not cause interference;
- This device must accept any interference, including interference that may cause undesired operation of the device.

Le présent appareil est conforme aux CNR d'Industrie Canada applicables aux appareils radio exempts de licence. L'exploitation est autorisée aux deux conditions suivantes :

- L'appareil ne doit pas produire de brouillage.
- L'utilisateur de l'appareil doit accepter tout brouillage radioélectrique subi, même si le brouillage est susceptible d'en compromettre le fonctionnement.

This equipment complies with IC RSS-102 radiation exposure limits set forth for an uncontrolled environment. This equipment should be installed and operated with a minimum distance of 20cm between the radiator and any part of your body.

Pour se conformer aux exigences de conformité CNR 102 RF exposition, une distance de séparation d'au moins 20 cm doit être maintenue entre l'antenne de cet appareil et toutes les personnes.

⚠ WARNING: Electric Shock.

To reduce the risk of electric shock, this product is equipped with a cord having grounding type plug. This plug must be plugged into an outlet that is properly installed and grounded. Contact a qualified electrician to install a proper outlet if doubt exists as to whether the product is properly grounded. Do not change the plug in any way.

- When not in use, the sockets should remain capped with the weather-resistant cover.
- Mount vertically with the sockets facing downward and be at least 30cm above ground level.
- To remove a plug from outdoor plug, hold outdoor plug's housing and pull the plug out.

Outdoor Smart Plug
CPLG0D2BLG1
Input: 120V AC 60Hz
Output:
General use, maximum 15A in total
Motor, maximum 1/3HP
Operation temperature: -20°C ~ 50°C
IP64
Rainproof
Type 3R Enclosure
Type 1 action
Pollution Degree 3
Rated impulse voltage: 1500V

The supply cord of this control can be replaced only by the manufacturer or his accredited service agent.

